



The **HIGHLANDER**

November 2018

**The monthly newsletter of Highlands Methodist
Church, Leigh on Sea**

Sunday Worship in November 2018

4 th	10:30	Café Church	Kathy McCullough
11 th	10:30	Morning Worship Remembrance Sunday	Colin Turner
18 th	10:30	Morning Worship	Worship Leaders
25 th	10:30	Morning Worship Communion Women against Violence Sunday	Rev Norman Hooks

**'Crafty Church' meets at 10:30 am on Sundays
For young people - meeting Jesus through art and craft
Come in and FaceTime with Jesus**

Find more information at: **www.highlandsmethodist.org.uk**



The ***Highlander*** is published by Highlands Methodist Church, Sutherland Blvd, Leigh-on-Sea, Essex, SS9 3PT. Highlands Methodist Church is a member church of the *Southend and Leigh Circuit*, 34/10, which is part of the Beds, Essex and Herts District.

Highlands Methodist Church **Hospitality in the Midst of our Community**

All telephone numbers are '01702' unless stated

Minister	Rev Norman Hooks norman.hooks@methodist.org.uk	311900
Secretary to Church Council	Patrick Smith	557702
Church Stewards	Lesley/Andrew Hyde Jean/Frank Edmonds Steve Jones Kathy McCullough Donald Mayes	473111 525250 553898 714528 473787
Worship Leaders	Jennifer Courtenay Frank Edmonds	556140 525250
Church Treasurer	Janet Watson	555702
Property Co-ordinator	Anne Lane annelane8@btinternet.com	01268 755291
Crafty Church Leaders	Jean Edmonds Ros Bryant	525250 478631
Pastoral Co-ordinator	Maureen Kelly	556152
Church Flowers	Jean Edmonds	525250
Lettings/Use of Premises	Les Davis	558381

From the Editor

Welcome to the November edition of the Highlander.

There really is only one topic that dominates this month of November 2018. On the 11th day we will mark exactly 100 years from the Armistice that effectively ended hostilities in the First World War. By that time more than 70 million military personnel from at least 19 countries had been mobilised. An estimated 9 million combatants (including 888,246 British or Colonial personnel) died as a result of the war, alongside 7 million civilians.

These numbers are hard to comprehend. Let's suppose that all 16 million of the dead were buried in a single place and you wanted to spend 1 minute paying your respects to each one, non-stop, 24 hours a day, 7 days a week. A little bit more than 30 years would do it.

To help us remember and to show that we remember, many of us wear a poppy. It is a representation of a common poppy (*papaver rhoeas*) an annual herbaceous flowering plant. It has the notable property that its seeds remain dormant for many years, then grow when the soil is disturbed. Due to the extent of ground disturbance due to shelling, corn poppies bloomed prodigiously in the trenches of the Western front.

In the UK (as well as elsewhere) the poppy has symbolised remembrance since 1921, when the Royal British Legion sold 9 million and raised £106,000. In 2016 the corresponding income was £47.6 million thanks to more than 300,000 volunteers. The poppy symbolises not only remembrance but also recovery and hope. It does not represent blood or glorify warfare, and has no political or religious meaning.

So white poppies don't really say anything different, and there is in my opinion no reason for the controversy that sometimes

surrounds them. The only argument against them (I suppose) is that they don't grow in Europe. They occur naturally in the Mojave Desert in the USA.

Wear yours, of whatever colour, with pride.

God bless all here.

AH

The Soldier

By Rupert Brooke

If I should die, think only this of me:
That there's some corner of a foreign field
That is for ever England. There shall be
In that rich earth a richer dust concealed;
A dust whom England bore, shaped, made aware,
Gave, once, her flowers to love, her ways to roam,
A body of England's, breathing English air,
Washed by the rivers, blest by suns of home.

And think, this heart, all evil shed away,
A pulse in the eternal mind, no less
Gives somewhere back the thoughts by England given;
Her sights and sounds; dreams happy as her day;
And laughter, learnt of friends; and gentleness,
In hearts at peace, under an English heaven.

Wednesday Coffee Morning at the HUB

We are waiting to serve you a special coffee at our Wednesday Hub morning from 10:00 to 12:00 every Wednesday. Take a break from your busy life, look in for a chat or information about Highlands through the week.

Prayer

We pray for our friends who are ill, housebound or bereaved and for those in residential care: *Pat Gare in Admirals Court, Marie Moore at Archers Court (Hitchin), Mary Barter in Langley Lodge and Arthur Hall in Bliss*. Our thoughts and prayers are with them and their families at this time.

We extend our sympathy to the family and friends of Doris Watson who died on 27th October. Doris and her husband Len, had been members of Highlands for many years.

News in Brief

Let there be light! (2)

Further to last month's report about the installation of new and vastly improved lighting, I am (ahem) de-lighted to announce that Highlands has received a grant of £2,000 which will be put towards the cost.

The grant has been generously provided by the Garfield Weston Foundation. Founded in 1958 by Canadian-born businessman W. Garfield Weston, GWF supports community, educational and humanitarian causes all over the world. Weston himself died in 1958, but the family company ABF still owns many household name brands including Dorset Cereals, Jordans, Kingsmill bread, Patak's, Ryvita and Twinings. You can learn more about GWF and its founder at <https://garfieldweston.org/>.



Mrs Lesley Hyde
Steward
Highlands Methodist Church
21 Thames Drive
Leigh-On-Sea
SS9 2XQ

Our Ref: 88896 / 2019 / 119591

Date: 11 October 2018

Dear Mrs Hyde

Lighting

Thank you for your recent application.

I am pleased to inform you that the Trustees have reviewed your application and are delighted to make a grant of £2,000.00 to your organisation. This grant is sent with the best wishes of the Weston family.

Please keep us informed about your organisation and the work that we are funding - the enclosed Grant Terms & Conditions outline our reporting requirements and everything you need to know in relation to our grant, which we hope is clear and helpful. Should anything about your project or organisation change, please let us know as soon as possible.

Please note that no further application can be submitted to the Foundation until 12 months have passed since the date of this letter. We also ask that you bank your grant cheque promptly.

We look forward to staying in touch and send our best wishes for your work and the coming year.

Yours sincerely

A handwritten signature in black ink that reads 'Sophia Mason'.

Sophia Mason
Weston Family Trustee

Garfield Weston Foundation
Weston Centre
10 Grosvenor Street
London W1K 4QY

T: +44 (0) 20 7399 6665
F: +44 (0) 20 7399 6684

W: www.garfieldweston.org

Registered Charity No. 230260

Humour Corner

Patient:

Doctor, those pills you gave me are fantastic. They've completely cured me, but I've started to walk like a crab.

Doctor:

Ah yes, that's a side effect.

X-cite

We made a steady start to our once a month Saturday Club with three families turning up to enjoy the fun. Come and join us on 17 November at 10:30 am. Tell your friends – bring your friends!

McMillan Coffee Morning

Thank you to all who attended and supported the HUB Coffee Morning. We raised the great sum of £225.00.

Dates to Remember

Knit and Natter Social Group

Would you like to come and join us? We are a friendly group who enjoy each other's company. Some of us knit or crochet but we all natter and support and care for each other. Just come along on Tuesday at 10:00 am to share a cup of tea/coffee and a biscuit. You will be made most welcome. We meet in the Church Lounge.

Serving the Homeless dates

- Wine Tasting evening by Vino Vero at St Margaret's Church Hall on Friday 16 November. Tickets available now at £17.00
- Service of Carols and Poems for Christmas on Friday 14 December at Our Lady of Lourdes
- On a similar theme, Ferndale Baptists are raising funds for the Winter Night Shelter with one of their legendary Curry Evenings on Friday 2 November. More details from Peter Courtenay

Christmas Celebrations

The Christmas dates are just about finalised. In advance of 'official'

publication here are some for your diary

9 Dec 10:30 am Toy Service, Parade, with Rev Norman
23 Dec 4:00 pm Carol Service with Gaudeamus,
24 Dec 5:00 pm Christingle Service with Rev Norman
11:30 pm Midnight Service **at Wesley** with Rev Norman
25 Dec 10.30 am Morning Service with Rev Norman
30 Dec 11:00 am United Service **at Rochford** with Pastor Steve Watts

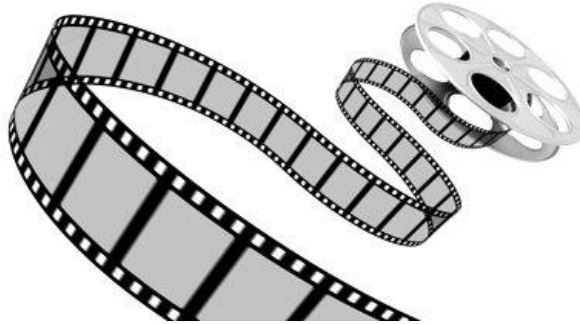
And make a note in your diary some other special events coming up

3 Nov Autumn Fayre
22 Nov Winter Wonder Community Day at Highlands
7 Dec MENCAP Christmas Show by various groups including that of David 'Music Man' Stanley
9 Dec 4:00 pm Michael Glaysher

Humour Corner

Some advice for your leisure time:

- If at first you don't succeed, skydiving may not be for you
- Don't take too much notice of what you see in the movies. Not all windows in Paris look out on the Eiffel Tower. When you get out of a taxi, you don't pull the exact fare out of your pocket every time. And if you ever find a time-bomb, it won't have a helpful read-out showing exactly how long before it goes off.
- If you put aside a thin piece of wood to use later as a paint-stirrer, then you've finally turned into your Dad



Movies @ Highlands
A HIGHLANDS WEDS HUB EVENT
Weds 14 November 1.30 pm

"WAR HORSE"

A moving 2011 drama, set before and during WWI, War Horse tells of the journey of Joey, a horse raised in rural Devon then bought by the British Army, leading him to encounter numerous individuals and owners throughout Europe, all the while experiencing the tragedies of the war happening around him.



Directed by Steven Spielberg and with a stellar cast including Emily Watson, David Thewlis, Tom Hiddleston and Benedict Cumberbatch, War Horse garnered 6 Oscar nominations, two Golden Globe Awards and five BAFTAs.

This is a FREE EVENT (come from 12 noon with your picnic and enjoy some soup. Tea and coffee and Rossi Ice cream also available)

X-Cite

Saturday Morning Children's
Club



10.30am - 12 O'clock

Saturday 17 November

Puppets * Games * Crafts * Stories * Songs

Highlands Methodist Church
Sutherland Boulevard, Leigh-on-Sea

Music

Concerts at Wesley

The season continues on Saturday 17 November with a concert by James Lewys featuring Songs from the Golden Era of 1940s and 1950s. Tickets are on sale now.



Leigh Lights

This season's lights will be lit on Friday 30 November. Wrap up warm!

Humour Corner

House-husband greeting wife home from work:
How were your sandwiches today? Are you feeling OK?

Wife:
Sandwiches were fine. I'm fine. Why do you ask?

Husband:
Oh, no reason. By the way I cleaned your shoes, and it turns out that fish-paste works really well on them.

HIGHLANDS METHODIST CHURCH WINTER WONDER COMMUNITY DAY

featuring

Southend Mencap "Showstoppers"

Thursday 22nd November

11am - 3pm

**including all age Community Service
at 2pm**

**COME ALONG AND JOIN
THE FUN**



**ALL AGE CHRISTMAS CRAFT
SHOWSTOPPING PERFORMANCES * SINGING
REFRESHMENTS**



Jobs for the garden

From our Special Gardening Correspondent

Although it's getting colder, there are still plenty of jobs to keep you busy in the garden.

If you're clearing away used compost from summer pots, don't be tempted to reuse it (other than at the bottom of very large pots) as all its goodness is spent. Put it in the compost bin or just on the garden.

Keep checking the greenhouse - is the heater working for when you need it? Any broken glass that really needs replacing?

Wrap outdoor pots in bubble wrap or fleece but don't put bubble wrap over plants, only fleece. Otherwise they'll sweat and rot.

And give the bird boxes a really good clean. Don't forget that if you start feeding the birds, it's really important to make sure you maintain this over the winter. Otherwise they'll spend precious energy coming to your feeder only to find it empty.

Now the leaves are falling well - and haven't the colours been marvellous? - it's time to make leaf mould. It makes a good soil conditioner but it does take 2 years to form. Fill a black polythene sack with fallen leaves, press down and water if really dry. Then

tie the top securely and puncture with a fork.

If you're a rhubarb lover (*which I'm not. Ed*) it's time to divide those plants and also, to take any hardwood cuttings. As well as blackcurrant and gooseberries, take buddleia and weigela cuttings. Root them in a sheltered spot or cold greenhouse. Press into the soil or compost by two thirds of their length and they should root over winter and be large enough to transplant or pot on next autumn.

SGC

Dine with the Homeless Update

Along with last month's recipe for **sugar free lemon drizzle cake** I should have mentioned that the sugar substitute xylitol is very dangerous for dogs. So if you share your home with a pilfering pooch or a larcenous Labrador – don't leave xylitol cakes lying around!

Humour Corner

Natural History Museum Visitor:
How old are these dinosaur bones?

Museum attendant:
Six million and three years and 4 months

Visitor:
Wow! Really? How can you be so accurate?

Museum attendant:
Well, I've worked here for three years and 4 months, and the bones were six million years old when I started



Arts & Crafts

Highlands Hobbies

We will be meeting on Thursday 1 November at 10:00 am in the Coffee Lounge. We will be doing Christmas Crafts ready for the Autumn Fair on 3rd November. Lunch will follow for those who wish to stay. We will also meet on 15th November. All are welcome.

Contacts - Jean Edmonds ☎525250 or Ros ☎478631

PinPoint

It will be lovely to welcome new members into PinPoint every 2nd and 4th Wednesday of the month. We meet on 14 and 28 November from 10:00 am to 12:30 pm. Come and join us.

"The Hub" provide us with refreshments and help us to spend an enjoyable morning, chatting, sewing, mending or learning how for the first time.

We are a friendly, open group and our members are both new and experienced sewers who enjoy embroidery, tapestry, cross stitch, quilting etc. We also bring our own mending to do - sewing up hems and replacing buttons. We enjoy helping and encouraging each other.

Serving the Homeless

The weather is really getting colder now. There are still people sleeping on the streets and we continue to remember them in our prayers.

We recently held a coffee morning following Homelessness Sunday and we received the following thank you letter from Serving The Homeless.

"We have had a busy year again. We continue to buy and deliver fresh produce each week to the Bradbury Centre, and have responded to requests for white goods. Last month we sent a cheque for £3,500 to HARP for a transitional project, whereby they help people to acclimatise back into everyday life after a period of homelessness.

We were pleased to send a cheque to the YMCA in the Summer; when young people leave their care they like to buy new bedding for the incoming guest and we were able to fund this request. In addition we are sponsoring a Youth Award - this year our award is for the Resident of the Year. It is early for Christmas but we have been shopping for small items so that we can give each young person living at the Y a goodie bag, as we did last year.

Now that the cold season is approaching we will be helping with the Winter Night Shelters whereby church halls throughout the Southend area open their doors on a rota basis for any people who are registered with HARP but who would otherwise be on the streets.

Your support to STH is very much appreciated and I can assure you that your lovely donation will be put to very good use. Thank you all again

Treasurer"

Thank you for your continuing contributions at the back of the church and of course your prayers that are always needed. With

the new White Heather units now up and running for ladies, gifts of toiletries etc, would be especially welcomed.

The Southend Food Bank

A report by Andrew Savile

On Sunday 14 October everyone who attended the harvest service, including scouts and guides, had brought along either gifts of non-perishable food or money. At a point in the service, all the donated items were assembled at the front of the church. The next day the food, in packets and many dozens of tins was transported in two cars to the Southend foodbank in Southchurch Road. The cash collection was donated separately.

So, what should we know about foodbanks? There are seven in the Southend area with a head office in Southchurch. The first was opened in 2013 by a group of Christian people, based on guidelines provided by the Trussell Trust, and currently all but one of the foodbanks are based in Baptist churches.

Why have foodbanks been set up? Every day people in the UK go hungry for reasons ranging from redundancy to receiving an unexpected bill on a low income. A simple box of food makes a big difference, with foodbanks helping prevent crime, housing loss, family breakdown and mental health problems.

People, individuals or families, who are referred to a foodbank have reached a real crisis in their lives and may be facing the need to make choices, whether to pay the rent, pay for electricity or gas or pay for food. If they cannot put food on the table for themselves or their dependants, they can ask to be referred to a foodbank. They need to apply to Citizens Advice, housing support officers, children's centres, health visitors, or social services. After an initial discussion a food voucher is issued which can be exchanged at a foodbank. The staff at the foodbank are very sympathetic and are trained to identify nutritional need and dietary requirements.

However, this is intended to be emergency food only, so in the medium term, longer lasting solutions must be found to help address some of the issues at the root of the crisis. A pack of food from a foodbank is expected to last for just three days, so the agencies listed above work hard to help address the reason for the crisis, but answers are not always straightforward. And while the government endeavours to implement a revised benefits system, the need for foodbanks is forecast to grow.

AGS

TWAM

I'd only add that while we were at Southend Foodbank, we witnessed a collection of goods by TWAM – Tools with a Mission. It turns out that TWAM collects unwanted tools, refurbishes them, sorts them into trade kits and sends them across the world for someone to create a livelihood for himself or herself. They send around 20 containers filled with over 300 tonnes of refurbished tools every year!

I suspect that a great many people who read this have tools at home and in the garden that they haven't used for a while. TWAM have a huge range of stuff they can use. If this is something you think you could help with, check out the information and advice at <https://www.twam.uk/donatetools>.

Humour Corner

Teacher:

This is a really good essay about your pet dog. But last year your brother did one exactly the same!

Pupil:

Of course he did, sir! It's the same dog.

Kathy's Corner 4

I was a typical moody teenager, sitting at the back of the class, working as little as possible and grudgingly wearing the unattractive school uniform. I remember a teacher asking me what I wanted to be when I left school. She was shocked when I said, "A missionary".

I didn't give that impression!

However there was a girl called Anne at the front of the class whose life exuded quietness and confidence. I admired Anne, and made efforts to get to know her. I discovered that she was from a Brethren family who kept to a strict Christian code of behaviour. Yet she was a lovely girl, full of faith and she became my friend.

Such was her influence on me that I found myself joining her on the front row, doing my homework, and by the end of the year we were the top two in the class. Her quiet Christian life had had a great influence on me.

Some of us may not be very vocal about our faith, but the quality of our lives can often affect other people around us. The Scripture¹ says "In quietness and confidence shall be your strength". May God help us to shine as lights for Him.



KMcC

¹ Isaiah 30:15

Alternative Worship

Gospel@The Fishermen's Chapel

Sunday 11 November at 7:00 pm for 7:30 pm (second Sunday). All are welcome for this relaxed evening of Gospel Music and reflection with tea/coffee and cake before and after the service. This occasion is not only tuneful and uplifting but a whole lot of fun.

The Fishermen's Chapel was formerly called New Road Church, situated (logically enough) in New Road just north of the railway line.

Belfairs Thirsty For?

Thursday 8 November at 7:00 pm (second Thursday)

Wesley Informal Service

Tuesday 27 November at 8:00 pm (fourth Tuesday)

If you would like to take part in any of these but need a lift to get there, contact AH ☎ 473111 and I'll do my best to make it happen.

Committees

Family Committee	11 March 2019 at 8:00 pm
Property & Finance	21 January 2019 at 8:00 pm
Pastoral	22 January 2019 at 10:00 am
Church Council	28 November at 8:00 pm

Coffee Mornings in November

Saturday 3 November	Music @ Highlands
Saturday 10 November	Serving the Homeless
Saturday 17 November	(X-cite*)
Saturday 24 November	Church

*We hope to run a coffee morning while X-cite is in progress. If anyone can help – do get in touch with Ros ☎478631.

Flower Rota

	Donated by	In memory of	Arranged by
4 November		Café Church	Margaret
11 November	Mary Mapp	Parents	Pauline
18 November	Mary Barter	Parents	Jean
25 November	Andrea Ames	Parents	Jean

SERVING the COMMUNITY 7 Days a Week

Children and Young People

Highlands Toddlers	Monday 9:30-11:30 am	Margaret Wood	 557512
Rainbows	Wednesday 4:00-5:00 pm	Jacqui Hendle	 557147
Brownies	Wednesday 5:30-7:00 pm	Dilys Haddow	 710207
Cub Scouts	Thursday 6:00-7:30 pm	Lesley Bacon lesleykbacon@googlemail.com	
Scouts	Thursday 7:30-9:00 pm	Sally Monk	 558857
Rangers	Alternate Thursdays 7:30-9:00 pm	Jacqui Hendle	 557147
Guides	Friday 7:00-9:00 pm	Jacqui Hendle	 557147

Fellowship Groups

Housegroup meets on 2nd and 4th Tuesdays.

Services to the Community

Regular **Sunday Worship**

Tuesday Morning **Prayer Service** at 9:00 a.m.

Traidcraft: Catalogue available for orders. Please contact Pamela and Patrick Smith - ☎557702.

Social and Recreational

Knit and Natter Group	Tue 10:00 am-12:00 noon	Sylvia ☎556433
Badminton Club	Mon 8:00 pm	Sarah ☎476009 or Sophia ☎07796 265676
Hobbies	1 st & 3 rd Thu 10.00 am – 12:00 noon	Jean ☎525250
Ladies' Badminton	Fri 10.00 am – 12:00 noon	Dilys ☎710207
Adult Art Classes	Thu 2:00 – 4:00 pm	Susan ☎551025 or 07875 079739
Children's Art Club	Thu 4:00 – 5:00 pm	

Items for the **December 2018/January 2019 issue** should be emailed to andrewghyde@aol.com **before Sunday 25 November**. No email? Don't despair; just telephone 473111 to arrange an alternative.

HIGHLANDS METHODIST CHURCH

All are Welcome to
Celebration Time with

MICHAEL GLAYSHER's Christmas Show

(Elvis Tribute Artist)

Sunday 9th December 2018

Show to commence at 4.00 pm

Christmas refreshments will be served from 3.00 pm

Donations to Mission and Community Fund
after expenses

Further details from Jean/Frank,
Tel: 01702 525250
Email: frank66thecroft@sky.com