



The **HIGHLANDER**

June 2019

**The monthly newsletter of Highlands Methodist
Church, Leigh on Sea**


Worship in June 2019

2 nd	10:30	Café Church	Kathy McCullough
9 th	10:30	Morning Worship	Eileen Simmons
16 th	10:00	Morning Worship Trinity Sunday Fathers' Day Extravaganza	Rev Norman Hooks
23 rd	10:30	Morning Worship	Worship Leaders
30 th	11:00	United Service at Belfairs <u>Transport Available</u>	Rev Norman Hooks

**'Crafty Church' meets at 10:30 am on Sundays
For young people - meeting Jesus through art and craft**

Come in and FaceTime with Jesus

Find more information at: www.highlandsmethodist.org.uk

 Highlands (Leigh) Methodist Church



The ***Highlander*** is published by Highlands Methodist Church, Sutherland Blvd, Leigh-on-Sea, Essex, SS9 3PT. Highlands Methodist Church is a member church of the *Southend and Leigh Circuit*, 34/10, which is part of the Beds, Essex and Herts District.

Highlands Methodist Church

Hospitality in the Midst of our Community

All telephone numbers are '01702' unless stated

Minister	Rev Norman Hooks norman.hooks@methodist.org.uk	311900
Secretary to Church Council	Patrick Smith	557702
Church Stewards	Lesley/Andrew Hyde Jean Edmonds Steve Jones Kathy McCullough Donald Mayes	473111 525250 553898 714528 473787
Worship Leaders	Jennifer Courtenay Frank Edmonds	556140 525250
Church Treasurer	David Watson	555702
Property Co-ordinator	Anne Lane annelane8@btinternet.com	01268 755291
Crafty Church Leaders	Jean Edmonds Ros Bryant	525250 478631
Pastoral Co-ordinator	Maureen Kelly	556152
Church Flowers	Jean Edmonds	525250
Lettings/Use of Premises	Les Davis	558381
Older Persons' Worker	Julie Peek	479804

From the Editor

It's been a time of people leaving roles. This is not the place to discuss politics, so I push that subject gently (and gratefully) to one side. Closer to home, Frank Edmonds and Colin Turner have both reduced their duties at Highlands.

I literally don't have space to list everything that Frank and Colin have done for Highlands, but I do extend a truly huge 'thank you' on behalf of everyone here. We'll still see both of them again on a regular basis, but the intention is that they'll have a bit less to do.

Frank as you may know has been unwell for a while but is now recovering from an operation. We send him every good wish to continue his recovery

Meanwhile, the outcome is a little bit more for everyone else to do. Not an intolerable burden, but nevertheless, if you are thinking to yourself that you'd like to pitch in (it's what we're good at!) then I'm sure we can find you something worthwhile to do. Just have a word with any of the stewards listed on the previous page.

God bless all here.

AH

Humour Corner

Husband:

Will you still love me when I'm old and wrinkly and grumpy?

Wife:

Of course I do, dearest.

From your Minister

June is set to be an exciting and important month!

The Circuit is doing the Annual Bible Month and this year we are exploring the book of Colossians; very exciting! Also be aware of the mid-week studies at Benfleet and Thorpe Bay where the themes will be developed.



We also have our "Father's Day Extravaganza" planned for 16 June. See details in our poster (Page 8) and get involved. Our 'Vision Word' for this year is ENGAGEMENT - and through this event we are looking to engage with families in the community. We need lots of help so let us know if you can join in. Let's celebrate all the men who have had a positive impact on our lives both young and old!

We also have a United Service at Belfairs on 30 June and I would encourage everyone to try and come – we have people who are more than happy to offer transport to those who need it!

Finally - following our GCM service I had a very interesting conversation with Colin Turner, our Circuit Steward. I felt what he said was important and on my request he wrote it down and sent this to me - see below. Colin steps down this August as Circuit Steward and we will sadly miss him at our Church Council Meetings where he has faithfully served us with love and devotion.

God bless,
Norman.

Right on Cue

by Colin Turner

At our recent Highlands General Meeting, we considered the subject of mission and how our daily, weekly and occasional contact with people - family members, friends, work colleagues, or acquaintances - can make a difference in leading them closer to God.



A picture came to mind of a game of snooker. Possibly the consequence of a misspent youth! In the game, different coloured small balls are arranged around the surface of the playing table. Players use a snooker cue to propel a single white ball to collide with other various coloured balls. The target balls then ricochet into

one of the string pockets situated around the table. The skill of the game is to hit the white ball in such a way that its spin and point of impact with the coloured ball not only knock the target ball into the desired pocket, but also position the white ball ready for the next shot. Otherwise you can play to confound the next player in their attempt to do the same.

I've never mastered the requisite skills to play the game for anything beyond personal enjoyment. But I feel I can use it as a metaphor.

As we filled out our 'Post it' notes with the names of people in each of our circle of acquaintances, I thought of snooker as similar to our role as Christ's Witnesses in today's world.

Prayer is the means by which our personal stories and lives affect and influence others. So when we prayerfully enter each new day,

our lives, with their energy and impetus, have an impact on those of others, much as the white ball hits those it is aimed at.



In some instances the results may seem indeterminate, with people and their problems bouncing off in all directions. However - and this is what we pray for - the ball sometimes strikes correctly, so that the person we engage with moves closer to the One who always provides

that place of safety and love in which to rest and grow.

However, our experience of mission differs importantly from the snooker table; we are fellow team members and not opponents. While a snooker player may work to prevent the next player from potting a ball, we do the opposite. We do our best to set up the next shot, to make multiple engagements with people along the way happen. Thus my friendly conversation with someone will be enhanced by yours, and then another person's act of kindness will further help to show and seal Christ's love to and for that same person.



At Highlands we reach and come into contact with many people. My prayer is that we, as God's family, will be encouraged as this endeavour continues and that the lives of those we serve and move amongst will be blessed and brought closer and within the presence of God through Jesus.

Colin Turner
Circuit Steward to Highlands Church

Prayer

We pray for our friends who are ill, housebound or bereaved and for those in residential care: Pat Gare in Admirals Court, Marie Moore at Archers Court (Hitchin), Mary Barter in Langley Lodge, Jean Burgess in St Martins Care Home and Doll Edwards in The Cedars. Our thoughts and prayers are with them and their families.

Best wishes to Ian Sperring and Olivia Jones who are due to marry on 22 June at St Andrew's Church, Meonstoke (Hants). A blessing in Leigh is planned for 31 August.

Thank you to all the Home Collection box holders for Action for Children (formerly National Children's Home). A total of £235.72 was raised this year (Sylvia Cornwell writes).

AH

Humour Corner

Jimmy:

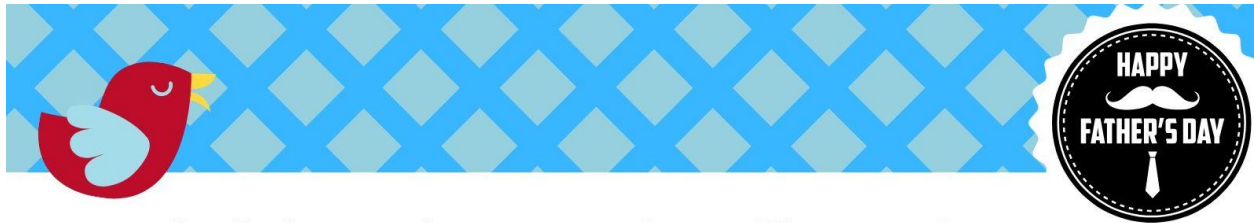
Can I go to Alexander's birthday party on Sunday? He lives in an actual castle you know.

Mum:

Wow! Yes of course you can. Is Alexander having a bouncy castle like you did?

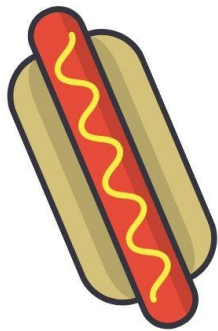
Jimmy:

No – his parents have hired a bouncy council estate.



Highlands Methodist Church

Father's Day Xtravaganza



BBQ Breakfast
from 10am



Best
DAY
ever!



Challenge your Dad games



Community
service

**SUNDAY 16TH JUNE
FROM 10AM-11.30AM**



A TIME TO CELEBRATE FATHERHOOD



join us on Facebook

Highlands (Leigh) Methodist Church

www.highlandsmethodist.org.uk

Access to Churches

A personal view from Jill Allen-King OBE

For the first 24 years of my life I only had sight in one eye. During that time I attended Benfleet and Thundersley Methodist Churches. I also attended St Margaret's School in Bowers Gifford. At each church I was able to read the hymn books and to learn many of the hymns off by heart. This helped me when I went totally blind at 24.

Over the past 56 years most churches have done a lot of work to make their churches more accessible for people using wheelchairs, such as replacing steps with a ramp and installing hand rails to steps. That is good, but for the blind or visually impaired, attending a service can be quite depressing. I'm a member of Chalkwell Methodist, but I visit other churches in the district as well. So many



services now use a projection screen, which is no help to me. I went to one church where they had no hymn books, and all the hymns were on a screen. This really does discriminate against blind people.

My own church has bought me sets of Braille hymn books, and yet sometimes we have a visiting minister, with some or all of the hymns on the screen. I, like many people, have tinnitus in one ear, and depend on a microphone being used. Again I have visited churches where they do not use a microphone.

I have spoken to many blind people from all over the country who

no longer go to church, as they feel they are not understood. In a church one should feel at home and be able to relax. I now arrive at church wondering if I am going to take part in the whole service.

My husband, who has poor vision, only comes to church occasionally. He cannot read Braille, and cannot see enough to read a screen, even if he sits in the front row. Perhaps every minister should spend a whole service sitting with a blindfold on, so they can understand what it is like for those of us who are blind.

When I had my first guide dog in 1971, there were some churches in the Southend and Rayleigh area that refused guide dogs. Fortunately over the years with much campaigning, this has improved. When I first started to attend Chalkwell Methodist, a carpet was provided for my guide dog. I have had to train people not to talk to the dog when it is working, and that you should never feed a guide dog.

There is still a long way to go to train people to understand how to talk to blind people, and how to help them in an understanding way. For example, if you want to talk to the blind person, then talk to them; not to the person who is with them. Yet it does still happen. 'Does she take sugar in her tea?'

Thanks for listening.

(There is lots more information for and about blind/ visually impaired people at www.rnib.org.uk)



Jobs for the garden

From our Special Gardening Correspondent

Aren't the roses giving a wonderful display right now? But you need to keep deadheading to ensure a constant supply of flowers for as long as possible. You need to keep your eyes open for any suckers. Suckers aren't pretty and you really don't want them. Unless you have a wild or heritage rose, that sucker won't have the same characteristics as your main plant.

Don't be tempted to cut it off. This will only encourage it to grow back with a vengeance. Instead, remove the soil to expose where the sucker's growing from and use thick gloves to twist or snap it off.

As soon as the flowers on your lilac have faded, prune it. This will help keep the bush in a good shape and ensure a good crop of flowers next year. If you leave it late for pruning, next year's flowers will be affected. Begin by pruning dead or diseased stems, then the pencil thin suckers and twiggy growth and finally stems more than 5cm in diameter. The rule of thumb is to cut no more than one third of the stems each year.

You can plant out all your tender bedding now and keep sowing lettuce, rocket, beetroot etc for a regular crop.

Don't forget to feed and water hanging baskets and containers and I find that a copper band or a ring of Vaseline around pots with hostas does stop the slugs.

I've lost my wonderful Victoria plums to moths before now so this year I'm trying a moth trap in the plum tree to try to catch them before they damage the fruit – I'll let you know if it works.

And I'll finish with a photo of the cheeky starlings in my garden. When it's time for a break from all the work, I sit and watch them – it gives me such pleasure. The juveniles are so funny – just like teenagers. Barging around the feeders, flapping furiously and then sitting with their mouths open waiting for mum or dad to feed them. They've obviously decided that I'm no threat as I can sit quite close to the feeders and birdbath and as long as I'm still, they'll ignore me.

Happy gardening until next month



Dates to Remember

Music

Jeremy Blandford

Jeremy will give a concert on the War Memorial Organ at Southend HS for Boys, including music by Bach, Mozart, Elgar, Whitlock, & Reubke. Included is a chance to view inside the organ with its 1,228 pipes and other mechanisms.

Sat 6 July 2019 - 7:30 pm £8 (£7 conc). More info at www.osos.org.uk/events

Southend Bandstand, Priory Park

Sat 1 June 3:00 pm – Dave Warren Jazz Quartet

Sun 2 June 3:00 pm – Southend Concert Band

Sat 8 June 3:00 pm – Show Choir

Sun 16 June 3:00 pm – Thundersley Brass

Sat 22 June 3:00 pm – Southend Vox

Sun 23 June 3:00 pm – Leigh Orpheus Male Voice Choir

Sat 29 June 3:00 pm – The Silburys

All of these are free. More info on 01702 215624

Allegro

‘Songs for all Seasons’ at

❖ Leigh Road Baptist Church Sat 15 June 7:30 pm

❖ Wesley Methodist Church Sat 22 June 7:30 pm

More info on 01268 751303

Other Dates

Father's Day Extravaganza – June 16

Details are on page 8, but this is just to say that everyone can help make this a great event. I'm fairly sure most of you know someone – neighbour, friend, relative – who is a Dad or has a Dad. So have a word, and invite them along!

It's not just for Methodists, or for Christians, or people who believe in a loving God. It's for everyone. Yes I mean that – all are welcome. So make sure you ask them!

Benfleet Coffee Morning

Thundersley Methodist Church (at Kennington Avenue, Benfleet, SS7 4BS) will hold a coffee morning in support of Fair Havens Hospice on Saturday 15 June from 10:00 am to 12:00 noon. More information from www.thundersleymethodistchurch.org.uk and from www.havenshospices.org.uk/fair-havens-hospice

Community Policing Meeting

This takes place here at Highlands on Monday 3 June at 7:00 pm. Everyone is welcome to attend and hear news and ask questions about crime, safety and local policing. The main topics are burglary, car theft and anti-social behaviour. Despite what you may have heard this is still a relatively safe and peaceful area, but all views deserve to be held.

Highlands Hobbies

We'll be meeting on Thursday 6 June at 10:00 am in the Church. Jean will be guiding us with flower arranging. Lunch will follow for those who wish to stay.

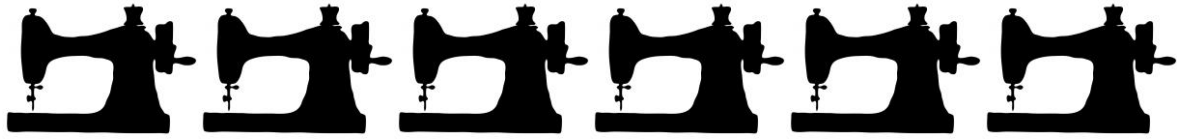
We'll also meet on Thursday 20 June at 10:00 am in No 1 room when Marjorie and Margaret will be guiding us with decoupage. If you would like to try Hobbies or simply want to find out more about what we do please do not hesitate to call either Jean or Julie - All are welcome.

Contacts - Jean Edmonds 525250 Julie Peek 479804

PinPoint

It will be lovely to welcome new members into PinPoint every 2nd and 4th Wednesday of the month. We meet from 10:00 am to 12:30 pm on 12 and 26 June. Come and join us.

'The Hub' provides us with refreshments and helps us to spend an enjoyable morning, chatting, sewing, mending or learning how for the first time. We are a friendly, open group and our members are both new and experienced needleworkers who enjoy embroidery, tapestry, cross stitching, quilting etc. We also bring our own mending to do - sewing up hems and replacing buttons. We enjoy helping and encouraging each other.



PINPOINT PROJECT

Calling All Needleworkers

An exciting Christmas venture, with a choice of three projects

A quilted Christmas Advent calendar



A pair of quilted placemats

or

A quilted Christmas stocking



Dates: **11, 25 September 2, 16, 23, 30 October**
Time: **10:15 am to 12.30 pm**

Non-refundable

**Like to join us?
Limited places.**

cost for each project is £18 to include materials & 6 weeks' tuition.

Please contact Jean Edmonds (01702 525250)
Please sign up before the end of July





Café Crew

4th Sun
every Month
5 to 6.30

A time for ...
The Community,
Jesus and the Church
to get involved
Together !!!
at Costa Hadleigh
269, London Road.

**Come along
for Coffee
and Chat**

**Grill The
Vicar?**

**Offer your
Prayers &
Thoughts**

(Editor note: 'Grill the Vicar' is not thought to be a menu option)

Humour Corner

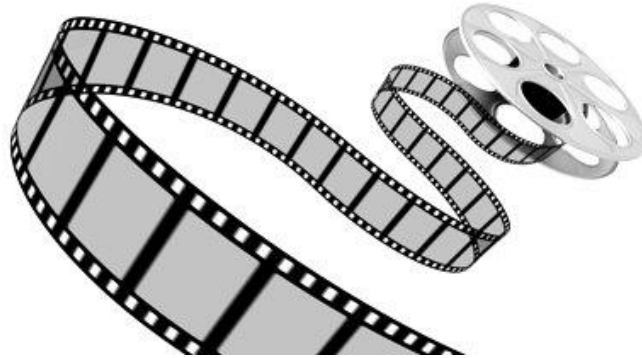
Tramp (having knocked on the door of the George & Dragon pub):
Can you spare some grub for a poor hungry soul?

Landlady:

No I can't! Go away, you horrible man or I'll call the police!

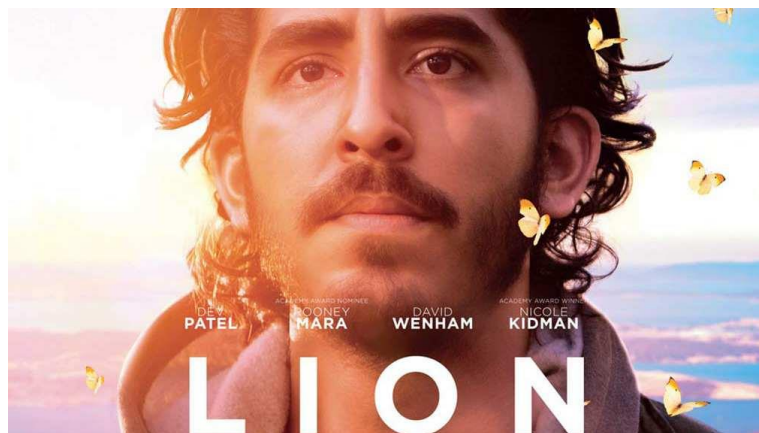
Tramp:

No need for that dear lady. Could I perhaps have a word with George?



Movies @ Highlands
A HIGHLANDS FRIDAY HUB EVENT
Friday 14 May 1:30 pm
'Lion' [PG]

Five year old Saroo (Sunny Pawar) gets lost on a train travelling away from his home and family. Frightened and bewildered, he ends up thousands of miles away, in chaotic Kolkata. Somehow he



survives living on the streets, escaping all sorts of terrors and close calls in the process, before ending up in an orphanage that is itself not exactly a safe haven. Eventually Saroo is adopted by an Australian couple (Nicole Kidman and David Wenham) and finds love and security as he grows up in Hobart. As an adult a chance meeting with some fellow Indians reawakens his buried yearning. Armed with only a handful of memories and his unwavering determination, Saroo sets out to find his lost family.

This is a FREE EVENT (come from 12 noon with your picnic and enjoy some soup. Tea and coffee and Rossi Ice cream also available)



Summer Evenings at Bradwell

Sunday evening Services scheduled for the beautiful and ancient Chapel of St Peter-on-the-Wall (AD 654) are as below (all at 6:30 pm)

'Where the distance between heaven and earth is tissue thin.'

JULY

- 7 Evening worship with BBQ with the Rev Steven Poss, Chaplain & Priest in Charge 4:30 pm -7:30pm
- 14 Evensong with Benediction with the choir of St Mary's Maldon and with the Rev John Dickens
- 21 Evening worship with the St Lawrence Singers and with the Rev Steven Poss
- 28 Common Worship evensong with the Rev Steven Poss

AUGUST

- 4 Evening worship with Rev Paul Mackay, Priest in Charge of St Marys Prittlewell and church choir
- 11 Taizé worship with the Rev Steven Poss, and St Thomas Bradwell church choir
- 18 Celtic evening worship with the Rev Steven Poss
- 25 BCP Evensong with the Rev Steven Poss, and St Thomas Bradwell church choir

We have in the past organised an evening visit to Bradwell, usually involving a picnic and a walk along the lovely shoreline. If anyone wanted to repeat this (and would perhaps be willing to act as organiser) please get in touch with Andrew or Lesley ☎473111.

The Revolving Door **- Suicide out of Homelessness**

Peter Courtenay - Southend Street Pastor

We still see rough sleepers on Southend's streets on our patrols but the numbers are significantly reduced – a testimony to the Council's Rough Sleeper Initiative financed out of Central Government Grant last summer.

The smaller numbers who remain present serious stories, but I have chosen not to relate them recently as they would be easily identified. They are not failures but rather very complex long-term 'work in progress' cases. Their problems will need concerted effort to resolve.



Also, the Council Housing Department's strategy is difficult to summarise. I have only a partial picture and hesitate to criticise. Indeed most of the cases we now encounter related to past failures in societal support within their individual lives and families.

For example, a child growing up without parental love will struggle to create a loving family for their own children. The current debate about young people being pushed towards suicide is very pertinent, especially when it focuses on social media.

Suicide is not a new symptom of social failure – The Samaritans was founded in 1953, and 3 cases we engaged recently are illustrative:

We witnessed 17-year-old Dan at around 11 pm, angrily kicking the waste bins on the seafront before throwing himself to the ground.

We approached him gently to offer help and he poured out his story that his 'uncle' had 'kicked him out'. He said he had nowhere else to go and nothing to live for so he intended to kill himself. The eviction that caused this mood may have been the latest in a series of incidents. We found out that he did have a job, indicating a degree of stability and we persuaded him that he probably had everything to live for. But he wouldn't countenance the idea of returning 'home' to perhaps resolve his differences with his uncle.

He calmed down and reconsidered his future but at 17 he was underage, and not appropriate for a homeless shelter. The only possibility was to call the Council's emergency line. As Dan was legally a child they had a duty of care towards him. But this made him even more despondent; apparently his experience with the Council's Youth Service had not been good either.

After a hot chocolate, Dan thought that his manager at the High Street eatery where he worked might be able to help him so we walked him there, warning him that his manager might have limited options. However, we found her supportive, welcoming and clearly fully aware of his 'fostered' status. I still don't think much of that company's products but my assessment of the quality of their management has soared. Our closing support was one of prayer that his manager would be able to help resolve his differences with his foster parents.



On one Saturday night the security staff at a town centre bar asked us to speak to a drunk, unstable and distressed man, Robbie, who had collapsed on the pavement.

As we patched up his injury, Robbie began to open up - his distress was focused on denial of access to his 3 year old son coupled with impotence in dealings with Social Services. His

homelessness was a barrier to establishing his credibility as a parent. He denied being drunk but we only inferred that alcoholism would probably be a further barrier.

We know from Samaritans' research that middle-aged men are one of the highest-risk groups for suicide - 3 times that of women. Unemployment further increases the risk, so his threat of suicide was unsurprising.

Unfortunately, being drunk meant that use of the HARP 'new 'sit-up' service was denied. HARP could not give him a place for the night but they invited him back the following afternoon for counselling with the prospect of a makeshift bed. We prayed this might lead to resolution of his difficulties and told HARP about his high suicide risk.

A third example was one I met as duty manager at a Night Shelter. George had just tried to cut his wrist out of homelessness despair. Fortunately he made a poor job of the suicide attempt and it would be easy to discount the incident as mere attention seeking.

However, anxiety and depression are typical outcomes of the complexity and conflicts in our benefit system: George can work, and he has a job with the local authority. Hence his earning capacity denies him access to housing benefit. A not-for-profit accommodation provider doesn't want to offer him shelter because their income depends on their tenants receiving housing benefits. And despite his earning capacity there was no commercial housing in Southend that was affordable to George.

I later learned that accommodation had been found for him three weeks later. But that could have been three weeks too late.

From these experiences it is clear that tackling homelessness is complex and challenging. It's not enough merely to deliver units of accommodation within the benefits system. The required service provision for many includes virtual parenting. For many survivors of broken relationships, we need to love them back to life. This takes compassion, time and the money to finance delivery. The case of George emphasises that the supported homelessness housing provided by (for example) HARP can only serve as a 'sticking plaster'. Meanwhile the principles of 'supply & demand' push the cost of local housing beyond affordability.

Most of all, we need to make space in our town for affordable housing. And yes – that may mean on the plot of land next door if that is where the capacity lies.

PC

Serving the Homeless (StH) / HARP

A splendid evening of 12 tables for the Quiz Night at St Margaret's Church Hall raised £645. Thank you to all our supporters.

Our Summer Raffle tickets will be available in June and will take the form of a Prize Hamper Bonanza. We have six major prizes of

- ❖ Children's Toys Hamper
- ❖ Gardening Hamper
- ❖ Pampering Hamper
- ❖ Wines and Spirits Hamper
- ❖ Italian Food Hamper
- ❖ Complete set of Colin Dexter ('Inspector Morse') books.

We hope that you will be able to support this venture at £1 per ticket. The draw will take place on 2nd September.

Following that there will be a fundraising meal at the popular EAST restaurant, which has been booked for 3 July at 7:30 pm. Tickets available now.

Thank you all for your continued support by attending the functions we organise, your continuing contributions at the back of the church and of course your prayers that are always needed.

Humour Corner

Victim attending an identity parade:

This one, officer! This one here! He's one of the four men that viciously attacked me.

Suspect forming part of the identity parade:

That's a downright wicked lie! There were only three of us.

Alternative Worship

Gospel@The Fishermen's Chapel

Sunday 9 June at 7:00 pm for 7:30 pm (second Sunday). All are welcome for this relaxed evening of Gospel Music and reflection with tea/coffee and cake before and after the service. This occasion is not only tuneful and uplifting but a whole lot of fun.

Belfairs

Thirsty For?

Thursday 13 June at 7:00 pm (second Thursday)

Wesley

Inspire - Contemporary Worship

A short upbeat worship service, a talk, and then group discussion.
Sunday 16 June at 5:30 pm (third Sunday)

Informal Service

Tuesday 28 June at 8:00 pm (fourth Tuesday).

Memory Worship

Worship for those with and without Dementia
Monday 17 June at 2:00 pm (third Monday)

Committees

Pastoral 24 September 2019 at 10:00 am

Church Council 19 June 2019 at 8:00 pm



Coffee Mornings in June

Saturday 1 June	Music @ Highlands
Saturday 8 June	Church Funds
Saturday 15 June	Mission
Saturday 22 June	TBA
Saturday 29 June	Knit & Natter



Flower Rota

	Donated by	In memory of	Arranged by
2 June	Joan Ford	Gordon	Jean
9 June	Jean Burgess	Mother	Jean
16 June	Louise Watson	Parents	Margaret
23 June	Andrea Ames	Pat & Greta	Pauline
30 June	United Service at Belfairs		

There are some vacant slots on the flower rota. Please contact Jean if you would like to take one up.

SERVING the COMMUNITY 7 Days a Week

Children and Young People

Highlands Toddlers	Monday 9:30-11:30 am	Margaret Wood	 557512
Rainbows	Wednesday 4:00-5:00 pm	Jacqui Hendle	 557147
Brownies	Wednesday 5:30-7:00 pm	Dilys Haddow	 710207
Cub Scouts	Thursday 5:45-7:15 pm	Lesley Bacon lesleykbacon@googlemail.com	
Scouts	Thursday 7:30-9:00 pm	Sally Monk	 558857
Rangers	Thursdays 7:30-9:00 pm	Jacqui Hendle	 557147
Guides	Friday 7:00-9:00 pm	Jacqui Hendle	 557147

Fellowship Groups

Housegroup meets on 2nd and 4th Tuesdays.

Services to the Community

Regular **Sunday Worship**

Tuesday Morning **Prayer Service** at 9:00 am.

Traidcraft: Catalogue available for orders. Please contact Pamela and Patrick Smith - ☎557702.

Social and Recreational

Knit and Natter Group	Tue 10:00 am-12:00 noon	Sylvia ☎556433
Badminton Club	Mon 8:00 pm	Sarah ☎902235 or Sophia ☎07796 265676
Hobbies	1 st & 3 rd Thu 10.00 am – 12:00 noon	Jean ☎525250
Ladies' Badminton	Fri 10.00 am – 12:00 noon	Dilys ☎710207
Adult Art Classes	Thu 2:00 – 4:00 pm	Susan ☎551025 or 07875 079739
Children's Art Club	Thu 4:00 – 5:00 pm	

Items for the **June 2019 issue** should be emailed to andrewghyde@aol.com **before Sunday 23 June**. No email? Don't despair; just telephone 473111 to arrange an alternative.