

The Highlander

June 2016



Living God, father and mother of us all,
we come as your people trying to do your will.
We come with our hopes and fears,
and ask that you will welcome us into the new
family
as we strive to map our new story.

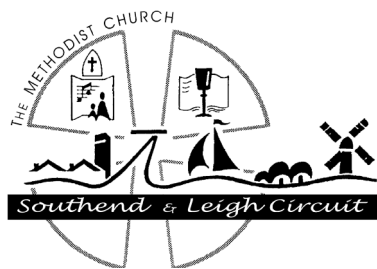
AMEN

Sunday Worship in June 2016

5th	9.30	Breakfast Fellowship
	11.00	Holy Communion Service at Wesley Methodist Church - Rev Julia Monaghan
12th	10.30	Parade Service - Worship Leaders (Methodist Homes Sunday)
19th	10.30	Holy Communion - Rev Julia Monaghan (Refugee Week)
26th	10.30	Morning Worship - Eileen Simmons

“S Club” meets at 10.30 am every Sunday
Sunday Club for Children - Crèche available

No. 815 Vol. LXVXIII



The Highlander is published by Highlands Methodist Church, Sutherland Blvd, Leigh-on-Sea, Essex, SS9 3PT. Highlands Methodist Church is a member church of the *Southend and Leigh Circuit*, 34/10, which is part of the Beds., Essex and Herts. District.

Highlands Methodist Church Hospitality in the Midst of our Community

Minister	Rev. Julia Monaghan	483827
Secretary to Church Council	Patrick Smith	557702
Church Stewards	Lesley/Andrew Hyde	473111
	Jean/Frank Edmonds	525250
	Steve Jones	553898
	Kathy McCullough	714528
Worship Leaders	Jennifer Courtenay	556140
	Frank Edmonds	525250
Church Treasurer	Janet Watson	555702
Property Co-ordinator	Anne Lane	01268 565644
	e-mail: annelane8@btinternet.com	
S Club Leaders	Jean Edmonds	525250
	Ros Bryant	478631
Pastoral Co-ordinator	Maureen Kelly	556152
Church Flowers	Jean Burgess	556278
Lettings/Use of Premises	Les Davis	558381
Mission Enabler for Older Persons	Julie Peek	479804
Website :	www.highlandsmethodist.org.uk	

All items for the July 2016 issue of *The Highlander* should be handed in writing to

Frank Edmonds (or put in the "E" section of the pigeon box in Jubilee Room) latest 10.30 a.m.

Sunday 19th June 2016. Preferably, items may be emailed to frank66thecroft@sky.com

The *Highlander* will be ready for distribution on **Sunday 26th June 2016.**



A Message from your Minister

Should we stay or should we go now? If we stay there will be trouble, if we go it will be double? **The Clash 1982**

There are currently 2 programs that get me shouting at the radio and asking when will it ever end? The first is the continuing drama on *The Archers* as I long for Helen and Henry to be reunited and the second is the heated EU referendum debate, where passion and controversy are the order of the day. I long for facts, clarity and an opportunity to think in an uncluttered way.

As previously good friends fall out and disagree, I have found the ecumenical resource from The Joint Public Issues Team, *Think, Pray, Vote*, very helpful in picking out a few of the key questions and offering a biblical perspective from which to reflect. In this short editorial, I offer some pointers for reflection.

On the 23rd June, we will be asked the question "*Should the United Kingdom remain a member of the European Union or leave the European Union?*" As Christians we are called to work, live and pray for a better society, which includes taking part in the political processes that shape our lives. How then do we allow our faith to inform our answer to the referendum question?

For Jesus the greatest commandment is to "*love the Lord your God with all your heart, and with all your soul, and with all your mind,*" while the second is to "*love your neighbour as yourself.*" Our relationship with God affects the way that we relate to and live with one another. The referendum question could therefore be phrased as, "*To what extent does the European union enhance or hinder our ability to love our neighbour and, in doing so, our ability to love God?*"

Who in this context is our neighbour? Are we talking about neighbours in our local community, in the UK, in Europe or the wider world? Does economic union help our relationship with some nations while hindering others? Does the way that the EU makes laws aid or get in the way with how we work out our faith?

At the heart of the EU is the single market, laws and policies regulating trade, allowing people and business to trade freely without barriers between 28 countries. The EU's single market area contains half a billion people and is the world's largest trading block, importing £1.7 trillion and exporting £1.9 trillions of goods and services each year. Trade within the single market amounts for around half of the UK's imports, exports and investment. For the single market to operate effectively, people have to be able to move between job markets, where regulations apply equally. The question is, are the benefits of the single market worth the cost?

Think, Pray, Vote, highlights that trade and markets have a moral element whether that's in the distribution of wealth, the provision of work or the creation of resources. The bible highlights that we are not owners but stewards of possessions that ultimately belong to God, and we should look to use these possessions in ways that serve God, through serving those in need.

P.T.O.

So what biblical principles help to inform our perspective on trade? Who is helped and who is harmed by the current single market arrangement? In what ways does the EU single market provide opportunity for serving God and serving others, and how does it limit this ability? How does holding the *Parable of the Talents* in tension with the exhortation to give to the poor (Luke 12: 33) move our thinking on?

Another key issue within the debate is the question of sovereignty. Who has the power to make decisions about our lives and where does accountability lie? Working together may involve giving up some of our control and the EU represents this, as 28 countries seek to co-operate over a range of policy areas. All Christian thought about sovereignty begins with the sovereignty of God. If God's love is universal then our starting point on sovereignty is one that transcends national borders. It's the idea that all other sovereignty exists under and is subject to, God's sovereignty. So where should countries or individuals surrender a degree of self-determination in order to cooperate?

Various passages in the bible point to co-operation and living in unity, whilst our individual diversity is also valued. Passages such as 1 Corinthians 12:12- 20 come to mind here, one body with many members. So do these passages of scripture affect how we see and relate to the EU? What are the ways in which working with others enables us to serve God and those around us and when can it be restrictive?

And finally there is the issue of the free movement of people. As part of their country's membership to the EU, all EU citizens are entitled to look for a job in another EU country. The free movement of people can be seen as part of the single market, allowing people to move as freely as money as well as bringing European people together. Approximately 2 million British people live in other parts of the EU, while around 2.3 million citizens of other EU countries live in the UK. Some parts of the UK have been changed by this migration pattern viewing it as providing an enriching diversity, whilst others see it as increasing pressure on the local neighbourhood.

The Bible contains stories involving the movement of people, whether it be the Israelites moving to escape famine, escape persecution or to follow God's calling. Within these stories, culture and identity are explored as a fruitful ground for blessings, both to those settling and those resident, as well as a threat physically and culturally. *Think, Pray, Vote*, suggests we should reflect on, what do biblical stories tell us about nations, migration and the place of the stranger (Numbers 15: 15)? How does the free movement of people in the EU affect our identities and how does this relate to our identity in Christ?

May God bless you as you wrestle with these questions and seek God's grace.

Rev Julia May 2016

P.T.O.

Loving God,

In this referendum that lies before us,
In the challenge of seeking an answer
In our differences of opinion
In our need to understand
May you guide us in our decisions
Make us gracious in our disagreement
As we work for your grace and peace to be made known **Amen**

Mapping Our Stories

In the context of a Circuit review, The Superintendent and CLT requested that the churches in the Southend and Leigh Circuit undertake a review of their missional possibilities. This was carried out at Highlands within the context of worship and a study of Romans 12 v1-13, on a Sunday in April. Members of the congregation determined the aspect of "*Our Calling*" which most resonated with them. Their choice was between a *Call to Worship, Learning and Caring, Evangelism* and *Service*. Having identified a preference, members then met with like-minded people to consider priorities for the short and medium term. Emerging from these groups, goals were voiced for further exploration and development and these are outlined below.

Worship: A desire for worship that is reverential and inclusive for all members of the church – younger and older – and welcoming to the wider community was expressed. This could include a regular mix of traditional and more contemporary styles and experiences of worship. Our monthly services involving the Uniform Organisations form an ideal opportunity to reach a wider group of people. This group also wanted to explore worship through nature, for example a spring walk with meditation; a summer service at Bradwell; a Garden Quiet Day. They also highlighted services of renewal and healing in order to "*open ourselves further to the working of the Holy Spirit*".

Learning and Caring: Housegroups, hymns, sermons that deepen understanding were all valued. As were the social groups that nurture; hobbies; shared lunch; holidaying at home; monthly worship and fellowship with Wesley.

Carers and those who were employed, who were unable to make use of all the daytime groups on offer, expressed frustration. There was therefore a desire for more flexibility rather than a "*one size fits all approach*". Important ideas shared were Café Worship to facilitate discussion and learning; a prayer chain; joint groups with other churches to learn about other cultures and faiths/worship; bible study and prayer for carers and those working; a meditation group

Service: This group valued Christian Aid; Action; Harp; Soup Southend; Circuit night Shelter; work with the homeless. So recommended that Highlands became a centre for:

- information sharing;
- donations
- prayer and social action
- that the church advertise itself as a donation point for the Food Bank & HARP
- sharing with users of the building how they could get involved
- be Circuit minded: summer night shelter; prayer group; street pastors; lobby MPs, councillors; develop overseas perspective

Evangelism: Despite being a very small group, valuable ideas came forward. The first was ensuring that the major celebrations were done well and were invitational services. Christmas was effectively promoted now Easter, Pentecost and Remembrance could be addressed. The idea of a chaplaincy to the groups that use the building was also suggested.

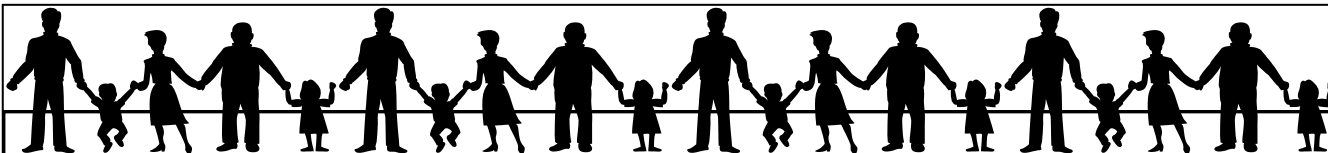
This would require resources but establishing links of friendship that would bring the groups into the church and the church to the groups was viewed as a valuable way forward. Finally, toddlers is a group valued by members of the community with 40 families coming on a Monday morning, with extra resources is there a possibility for developing a monthly messy church from this group?

It was also helpful to see that the majority of church members self selected for *Service* and *Learning and Caring*, a position that reflects the church's mission statement to "*Sharing God's Love in the Community*." Jesus' parable of the Good Samaritan, found in Luke 10, could be viewed as encapsulating the heart of Highland's Methodist Church. Primarily it would see itself through *Service*, as the Samaritan stopping by the side of the road, motivated by compassion and a sense of injustice, wanting actively to seek a supportive solution.

The community would also see the church as *The Inn*, a place where vulnerable people can be made to feel welcome and receive nurture, members would resonate with the idea of being *Inn Keepers*, offering hospitality encapsulating their call to *Learn and Care*.

This mapping exercise has been helpful in beginning a conversation regarding the gifting and shaping of Highlands. To build on this good start the church community would benefit from a continuing conversation. This could be done through engaging with the story of ***The Good Samaritan***, over the coming Connexional Year. What does it mean for Highlands to be *The Samaritan*? How can the *Inn Keepers* be sustained? What shape can the *Inn* take? What would it mean if we admitted our vulnerability and inhabited the position of the *wounded man* on the side of the road? And for further challenge, how are we the *robber*? All of these matters will be brought to our subsequent Church Councils. Many Blessings

Rev Julia



Prayer

We pray for our friends who are ill, housebound or bereaved and for those in residential care: Audrey Dobson at *St Martins Care Home*, Joan Field at *Merrie Loots Farm*, Marie Moore at *Archers Court* in Hitchin and Margaret Ross at *Memory House*.

Our thoughts and prayers are with them and their families at this time.

Congratulations

To Nick and Katy (nee Saville) Kollasch on the arrival of Oliver Christian Alexander on 18th May in Colorado USA. Weighing in at 6lbs 11 oz.
A third grandson for Pauline and Andrew Saville



To Ester Barter and Andrew Willims who celebrated their recent marriage in Brisbane, with a Blessing Ceremony at Highlands on 7th May

To Stella and Keith Carter who celebrate their Diamond Wedding on 23rd June. They were the last couple to be married in the old Church, now the Church Hall. The present church opened in July 1956 and Iris and Tony Clare were the first to be married in July



To Jean and Frank Edmonds who celebrate their Golden Wedding on 25th June. They were married at High Barnet Methodist Church.

Flower Rota for June 2016

<u>Date</u>	<u>Donated by</u>	<u>In memory of</u>	<u>Arranged by</u>
5th		Joint Service at Wesley	
12th	Jean Burgess	Mother	Jean Edmonds
19th	Louise Watson	Parents	Hobbies
26th	Andrea Ames	Pat and Greta	Margaret Wood



Dates to Remember

Knit and Natter Social Group

We are a friendly group of ladies who meet on Tuesday morning from 10am to noon during term time. Some of us knit, some crochet and some of us just natter. We enjoy each other's company and a cup of coffee/tea and biscuit. You will be made very welcome if you would like to join us.

Fundraising Concert

Saturday 16th July - *Allegro at the Movies at 7.30 pm.*

Allegro was established in November 2013 by a group of friends. All the members are experienced singers; each has sung with some of the other members in various choirs and societies, now they are enjoying singing together as one choir.

The aim of Allegro is to have fun rehearsing a wide repertoire of music and to present high quality concerts which will raise funds for charitable causes. In the first two years they have raised £7,400 for various charities and community groups.

Our summer season 'Allegro at the movies' will be an evening of wonderful music, from traditional choral arrangements to popular modern composers and hit musicals. The concert at Highlands Methodist Church will raise funds for the refurbishment of the sanctuary area at Highlands and The Southend Huntingdon's Disease Society. Please contact Anne (01268 565644 or annelane8@btinternet.com) or Ros

(01702 478631) to buy your tickets which are priced £10. Tickets can also be brought on the door.

Leigh Music Festival

This will take place at Highlands during the periods 9-11 June, 17-19 June, 23-26 June, 1-3 July and the Prize-Winners concert on July 8th.

Highlands Hobbies

We meet on 2nd June for flowers, card making and various crafts. We follow with a bring and share lunch for those who wish. We will also meet on 16th June from 10 to 12 noon. Why not look in for coffee and a chat and see what we get up to, all are welcome to join our happy group.

(Contact : Jean Edmonds 525250 or Ros Bryant 478631)

MOTHS

At the next meeting on Tuesday 7th June at 2.30pm Tony Windsor will entertain. All are welcome.

ABRSM Exams

The music exams are with us again! The dates are : Thursday June 30th, July 4th - 9th, July 11th, afternoon only, July 12th - 14th and July 16th. As usual any help with stewarding will be much appreciated and a list of dates will be put in the Jubilee Room giving the dates when help is needed.

Referendum Polling Day

On 23rd June the Lounge and Room 2 will both be in use from 6.15 am to 10.30 pm.

EU Referendum Prayer Vigil

There will be an opportunity to pray for the referendum vote
and for our place in the global community
Thursday 16th June from 7.00 to 8.00pm
at **Chelmsford Cathedral**
Full details in the Jubilee Room

Alternative Worship

Belfairs Methodist Church - "Thirsty For ??" - 2nd Thursday
Next date — 9th June at 7.00 pm
+ + + +
Wesley Methodist Church - Informal Worship - 4th Tuesday
Next date - 28th June at 8.00pm

H.M. The Queen 90th Birthday

We will mark the Queen's special day with a birthday cake on Sunday
12th June after the Parade Service

Coffee Mornings



4th May - Music at Highlands
11th May - Rangers
18th May - Craft Group
25th May - Rangers

Highlands 90th Anniversary Celebrations

Over the weekend of 22nd/23rd October we will be celebrating 90 years of Highlands. There will be a display of historical events at Highlands & maybe some floral arrangements to portray the decades, together with a guest preacher on the Sunday.

Several things are already being prepared for the weekend but there are two meetings for those who would like to come along who would like to take part, come along to help or are interested on what is happening!

1st meeting – Thursday 30 June at 8 pm

2nd meeting – Monday 19 September at 8 pm

Fundraising Events

Two extremely fine concerts, recently raised funds to be used towards the continued refurbishment of our premises.

The concert by Original Woodwind Ensemble raised £570.50 and the concert by Gaudeamus raised £357.55 We are extremely grateful to both these groups for their efforts on our behalf.



The 2016 Week of Accompanied Prayer

From Sunday 9th – Sunday 16th October, the Leigh Section will be joining with St Clements to hold a Week of Accompanied Prayer.

Why are we having a Week of Accompanied Prayer (WAP)?

The purpose of such weeks is to encourage people in their prayer lives by providing an opportunity to reflect each day on their prayer, in the company of a prayer guide, or companion. What an individual participant experiences, over the course of the week, will be unique to them. For example, one may learn different ways in which to pray, another be helped to overcome a difficulty they have with prayer and someone else may simply begin to pray regularly for the first time. Often people experience a new or deeper meaning in their prayer and a greater awareness of God's presence in their daily lives.

It sounds like a retreat. If I take part, do I have to go somewhere special for the whole week?

A WAP is like a retreat but it doesn't involve going away for the week. Each day you will meet with your guide for thirty minutes either at one of the section churches or at St Clements. You will be invited to set aside thirty minutes to pray on your own each day. For the rest of the time the activities of your day continue as they would normally whilst feeding into and being fed by prayer.

Who are the Prayer Guides?

The team of prayer guides may include women and men of various denominations, some lay, some ordained and possibly some members of religious orders. All will have received training in helping others in their prayer. The role of the guide is mainly to listen: to accompany the participants during the week, encouraging each person to honour his or her own prayer and to be aware of how it may be developed.

Does the WAP cost anything?

Although the WAP is free to join, the week will cost in the region of £500 to put on and therefore we suggest that you consider making a donation of £5 to £10 to contribute to these costs.

P.T.O.

Where can I get more information?

Between June and the beginning of October more information will be available through:

Leaflets at the back of church

Meetings: 11am 9th July St Clement's
8pm 28th July Wesley Methodist

These meetings will explain how the week works and answer other questions that you may have. You are invited to attend the meeting which is most convenient for you.

If you are uncertain whether the WAP is for you, please feel free to talk with Rev Julia

Some feedback from participants in the WAP last year:

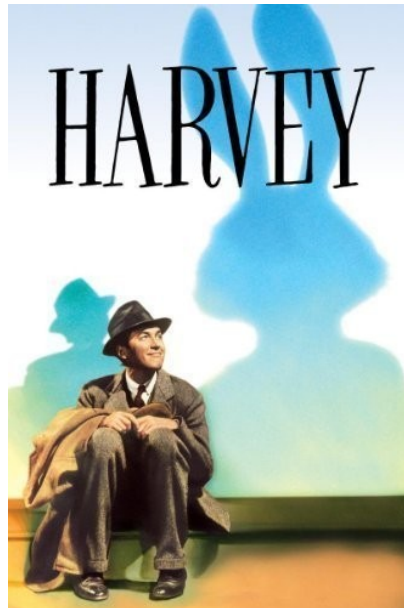
Before the WAP I was nervous and not sure if I was doing the right thing for me. I am grateful to the WAP for making me aware of the benefit of a dedicated time for prayer.

Before the WAP my feelings and expectations were that something suitable for me and my needs was being offered. It helped me to become more aware of the presence of God within and around me.

I am grateful to the WAP because it has cleared my head of unnecessary "gabbling" at prayer and has shown me the value of silence and how God really speaks to me in the silence!



Next Stop Middle East
An Evening Of Poetry & Testimony
The Story So Far
with Anna Turner
Canvey Island Methodist Church
Waarden Road, SS8 9AB
Saturday 25th June 2016
7pm to 9pm
Admission Free – Offering To Be Taken
All Welcome
Contact. Colin & Cathy on 01268 684294

MOVIES @ HIGHLANDS**Presents****HARVEY****Wednesday 15th June at 1.30pm****Highlands Methodist Church Hall**

Elwood P. Dowd (James Stewart) is a good-natured eccentric who is a regular fixture at his neighbourhood tavern. He doesn't cause any real trouble, except for his insistence that his best friend is an invisible six-foot-tall rabbit named Harvey. Wherever Elwood goes, Harvey goes! James Stewart gives one of his finest performances in this lighthearted film based on the Pulitzer Prize-winning play.

A FREE event (come from 12 noon with your picnic lunch and enjoy some soup. Tea and coffee also available)

Holiday at Home

We are looking at various events for the Summer period.

There will be a Strawberry Tea at the home of Maureen Kelly on the afternoon of 5th July.

There is also the possibility of a Fish and Chip lunch, a film of old Southend and a Punch and Judy Show.

Watch this space !



ADVERTISEMENT

SHARE IN A FRENCH VILLA

A 10% share for sale in a luxury villa. £53,000 o.n.o.

Fractional ownership (NOT timeshare)

in Flayosc, in the Var region of Provence.

Heated pool, sleeps up to ten, boules court, games room,
superb views, built in an acre of olive terraces.

Nearest beaches St Raphael/St. Maxine/St. Tropez,
skiing in Gleolier, local golf courses,
water sports and varied walking.

The Company (Flayosc Property Ltd)
is English and owns this one villa.

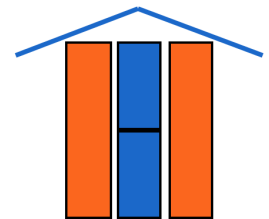
Four of the eight current shareholders are families
living in Southend.

On line brochure from geoffnash99@yahoo.co.uk.

You are welcome to phone us (472521)
if you would like any more details.

Geoff Nash and Eileen Simmons

Serving the Homeless



DIARY OF EVENTS FOR 2016

23rd June	Afternoon tea at the Park View Suite, Chalkwell Park, at 2 pm. Tickets £10 per person.
July/August	Summer Raffle: contact the number below for tickets.
July/August	Holiday activity for the children: follow the clues from the Cliffs Pavilion to the Conservation area. Prizes will be awarded for the correct answers.
22nd October	Italian meal in the upper hall at Our Lady of Lourdes Parish Centre.
16th December	Carols and Poems for Christmas at Our Lady of Lourdes Church followed by mulled wine and mince pies in the parish centre.

For further details contact Frank Edmonds on 01702 525250



**Bedfordshire, Essex and Hertfordshire
District Policy Committee**

Invite you to a Farewell and Thanksgiving service
for the work of our District Chair

The Revd Anne E Brown

at Marlborough Methodist Church , St Albans
on Saturday 16th July 2016

Full details in the Jubilee Room



**Bedfordshire, Essex and Hertfordshire
District Policy Committee**

Invite you to a Welcome Service
for our new District Chair

The Revd Dr David Chapman

at Chelmsford Cathedral
on Wednesday 24th August

Full details in the Jubilee Room



Southend and Leigh Methodist Circuit
welcomes

Rev Chris Sandy and his family

Please come and join in the welcome service
at Benfleet Methodist Church
on Saturday 10th September at 3pm

Full details in the Jubilee Room



INVITATION TO A DISTRICT DAY

TO BE HELD AT BENFLEET METHODIST CHURCH

High Road, Benfleet, Essex, SS7 5LH

on

SATURDAY 30 JULY

INDUCTION OF DISTRICT PRESIDENT

Linda King

SERVICE at 11.30 am

Including an introduction to the next District Project
Arab Orthodox Society, East Jerusalem

AFTERNOON SESSION at 2 pm

SOUTHEND TOWN CENTRE MINISTRY

Revd Hannah Bucke

Coffee available at Benfleet's regular coffee morning from 10 am

Lunch 1pm – 2pm

Please bring packed lunch, drinks available

Tea and Cake to follow the Afternoon Session

There are some parking spaces at the rear of the church off Hall Farm Road, SS7 5JR
There is limited parking at the front of the church for blue badge holders and those with limited mobility.

There is a large public car park five minutes' walk away off School Lane (SS7 1NS) at the bottom of Essex Way. Parking charge of £2 on Saturday

BIG THANKS

This really should NOT be at the back of our magazine but much nearer the front. At this time we would like to thank the Monday evening Badminton group for their fine effort in repainting the court lines in the Hall.

Our thanks also go to Jackie Williams for all the hard work that she puts in to the church garden and her green finger work for the annual plant sale. We thank Percy as well for his help with the ivy.

There are a host of people who do jobs here and there which most of the time go unnoticed and unthanked. Thanks to you all as well.

Serving the Community 7 Days a Week



Children and Young People

Toddlers Group, Monday	9.30-11.30a.m.	Margaret Wood	557512
		e-mail contact :-	
		highlandstoddlers@hotmail.co.uk	
Rainbows Wednesday	4.00-5.00 p.m.	Karen Packer	474151
Brownies Wednesday:	5.30-7.00 p.m.	Dilys Haddow	710207
Cub Scouts Thursday:	5.45-7.15 p.m.	Dan Raven	07982 840145
Scouts Thursday:	7.30 p.m.	Sally Monk	558857
Rangers Alternate Thursdays	7.30 p.m.	Jacqui Hendle	557147
Guides Friday:	7.00 p.m.	Jacqui Hendle	557147
<i>School Term-Time Only</i>			
Highlands Pre-School Mon - Fri:	9.15 - 12 noon	Clara Mintern	715880

Fellowship Groups

Housegroup meets on Tuesdays.

Services to the Community

Regular Sunday Worship

Midweek Communion :-

1st Wednesday	Wesley Methodist Church at 9.00 am
2nd Wednesday	Belfairs Methodist Church at 9.00 am
4th Wednesday	New Road Methodist Church at 9.15 am

Tuesday Morning Prayer Service at 9.00 a.m.

Coffee mornings: Saturday from 10.00 a.m. to 12 noon in the Church

Coffee is also available to visitors to the Craft Group on Tuesdays and Hobbies on Thursdays

Traidcraft : Catalogue available for orders. Various items on sale at rear of church.

Social and Recreational

Knit and Natter Group Tuesday	10.00 a.m.-12 noon (<i>Sept.-July</i>)	
Badminton Club Monday	8.00 p.m.	Sarah 01702 476009
		or Sophia 07796 265676
Hobbies 1st & 3rd Thursday	10.00 a.m. - 12.00p.m.	Jean 01702 525250
Ladies Badminton Friday	10.00 a.m.	Dilys 01702 710207
MOTHs (<i>Meet on Tuesdays at Highlands</i>)	1st Tuesday 2.30 p.m.	
Adult Art Classes Thursday	2 - 4 p.m.	Susan 07875 079739
Children's Art Club Thursday	4 - 5 p.m.	or 01702 551025
Brush Strokes Art Group Saturday	9.15 a.m. - 12.15 p.m.	Beverley 01277 627043

The Badminton Players meet quarterly for play readings. Contact: David Gare (711013).